

*Please specify the power supply type.

POWER SUPPLY	APPLICATION TYPE DESIGNATION
AC100V	PRL-6-WP
AC200V	PRL-6-VP

○(Required power supply)

MICRO SWITCH
250V AC 5A RESISTIVE LOAD

COLOR : 10YR7.5/14
DETECTION TORQUE : About 10.0N · cm
REVOLUTION : 1RPM
AMBIENT TEMPERATURE : -10 ~ +40°C

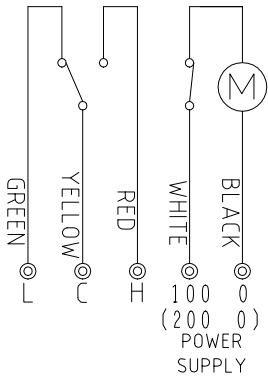
*Please specify the cable gland type.

CABLE GLAND TYPE	Range of acceptable cable size
GEUL10-G P1	φ 11 ~ φ 12
GEUL10-G P2	φ 10 ~ φ 11
GEUL10-G P3	φ 9 ~ φ 10
GEUL10-G P4	φ 8 ~ φ 9

○(Required cable gland)

APPLICATION RANGE: Ex d IIB T4 Gb
APPROVAL No.: TC22542X
EXPLOSION-PROTECTED CONSTRUCTION: d
EXPLOSION CLASS: IIB
Temperature class: T4

Q'ty :



図番 CHANGE NOTICE

承認 APPROVED

検図 CHECKED

製図 DRAWN

takahashi

名称 TITLE

TPE-100

PADDLE TYPE
LEVEL SWITCH

第三角法

THIRD ANGLE
PROJECTION

尺度 SCALE

1:2

日付 DATE

Jan,21,2020

東和制電工業株式会社

TOWA SEIDEN INDUSTRIAL CO., LTD.

図面番号

DRG. No.

HR-95012