

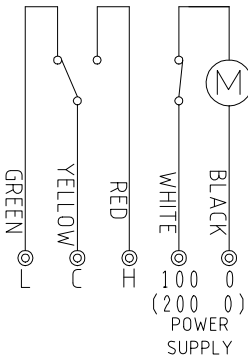
\*Please specify the power supply type.

POWER SUPPLY	APPLICATION TYPE DESIGNATION
AC100V	PRL-6-WP
AC200V	PRL-6-VP

○(Required power supply)

MICRO SWITCH  
250V AC 5A RESISTIVE LOAD

COLOR : 10YR7.5/14  
DETECTION TORQUE : About 10.0N · cm  
REVOLUTION : 1RPM  
AMBIENT TEMPERATURE : -10 ~ +40°C



\*Please specify the length.

Q	NOTE	Q'ty	Q	NOTE	Q'ty
250			700		
300			750		
350			800		
400			850		
450			900		
500			950		
550			1000		
600			2000		
650			3000		
			4000		

○ (Required length)

\*Please specify the cable gland type.

CABLE GLAND TYPE	Range of acceptable cable size
GEUL10-G P1	φ 11 ~ φ 12
GEUL10-G P2	φ 10 ~ φ 11
GEUL10-G P3	φ 9 ~ φ 10
GEUL10-G P4	φ 8 ~ φ 9

○(Required cable gland)

APPLICATION RANGE: Ex d IIB T4 Gb  
APPROVAL No.: TC22542X  
EXPLOSION-PROTECTED CONSTRUCTION: d  
EXPLOSION CLASS: IIB  
Temperature class: T4

Q'ty:

図番 CHANGE NOTICE	承認 APPROVED	検図 CHECKED	製図 DRAWN	名称 TITLE
			takahashi	TPE-501 PADDLE TYPE LEVEL SWITCH
	第三角法 THIRD ANGLE PROJECTION	尺度 SCALE 1:2	日付 DATE Jan,21,2020	図面番号 DRG. No. HR-95021
東和制電工業株式会社 TOWA SEIDEN INDUSTRIAL CO., LTD.				